

# YD系列熨平机·电加热型

## YD Series Flatwork Ironer Electric Heating



- 1 直径为Φ800的大辊筒及重要小辊均采用不锈钢制成。
- 2 不锈钢电热管，发热快，能量转换效率高，使用寿命长。
- 3 变频调速，采用知名品牌DELTA变频器。采用链轮传动的搭牙技术，使传动速度差值更精确、合理，机器运行更平稳。
- 4 卸荷式轴承座结构，可消除因大辊筒热胀冷缩而给轴承带来的额外轴向负荷，既保护了轴承，又使整机的变形得到了控制。
- 5 组合式设计。客户现场升级方便，升级成本低。
- 6 结合多年设计经验，包角角度达到最佳，熨平效果又快又平。
- 7 特殊设计的外伸式出布轴可直接配套折叠机使用，还可避免静电吸附。

- 1 Big rollers and important small rollers are made of stainless steel. Big roller's diameter is Φ800.
- 2 Stainless steel heater electric heating tube, fast heating, high heat transmission efficiency, long service life.
- 3 Frequency controllable by famous DELTA inverter. Sprocket drive overlap technology makes transmission speed difference more accurate and reasonable. Machine operation smoother.
- 4 Load discharging bearing seat can eliminate the extra load caused by big roller's thermal expansion. It not only protects bearing but also against machine deformation.
- 5 Unit design makes the upgrading easier, lower the upgrading cost.
- 6 With the experience of more than a decade, wrapping angle reaches a perfect condition, ironing effect is fast and good.
- 7 Special extended linen roller as the supporting parts can connect with the folder directly, it also can avoid electrostatic adsorption.



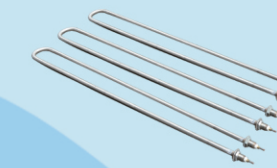
▲ 适配的操作控制系统，操控方便，显示一目了然。  
▲ Supporting operation system, easy operation, clear display.



▲ 高配的变频电机和蜗轮蜗杆减速机组合，运行速度快，传动力矩大，运转平稳，维护成本低。  
▲ The combination of high grade frequency conversion motor and worm gear reducer has fast running speed, large transmission torque, stable operation and low maintenance cost.



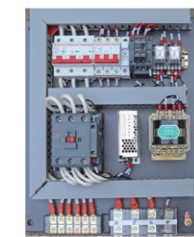
▲ 变频调速，可联动控制，完美匹配输送或折叠设备。  
▲ Frequency inverter, linkage control, perfectly match conveyor and folder.



▲ 不锈钢材料制作的空烧电热管，发热快，能量转换效率高，使用寿命长。  
▲ Stainless steel heater tubes, fast heating, high heat transmission efficiency, long service life.



▲ 熨平带自动张紧装置，可根据能源供给和织物厚度以及熨平带自身的变化，自动调节熨平带张紧程度，提高熨平质量。  
▲ Ironing belts can adjust the tightness by itself according to linen thickness, energy supply and belts themselves, to increase the ironing quality.



▲ 正规接线，线号管和图纸线号一一对应，标号清晰、牢固、完整、不脱色，方便日后的故障排查及维护。  
▲ Standard wiring connection, wiring tube number clearly matches with the number on the drawing, easy to do troubleshooting and maintenance.

### 产品参数 (Parameters)

型号/参数	Type/Parameter	单位 Unit	YDI-2800G	YDI-3000G	YDII-2800G	YDII-3000G	YDIII-3000G	YDIII-3300G
大滚筒数量	Big Roller Number		1	1	2	2	3	3
大滚筒直径	Big Roller Diameter	mm	Φ800	Φ800	Φ800	Φ800	Φ800	Φ800
最大熨平宽度	Maximum Ironing Width	mm	2800	3000	2800	3000	3000	3300
最大熨平速度	Maximum Ironing Speed	m/min	6	6	10	10	14	14
最高熨平温度	Highest Ironing Temperature	°C	200	200	200	200	200	200
电机功率	Motor Power	kW	0.55	0.55	0.75	0.75	1.5	1.5
电加热功率	Electric Heating Power	kW	36	39.6	72	79.2	118.8	126.9

### 外形尺寸 (Dimension)

宽	Width	mm	3880	4080	3880	4080	4080	4380
深	Depth	mm	1670	1670	2620	2620	3570	3570
高	Height	mm	1360	1360	1360	1360	1360	1360
重量	Weight	kg	1500	1600	2900	3100	4150	4450